



Tutorial

# Uninstall ISL Light

ISL Light for Android



1

## Settings

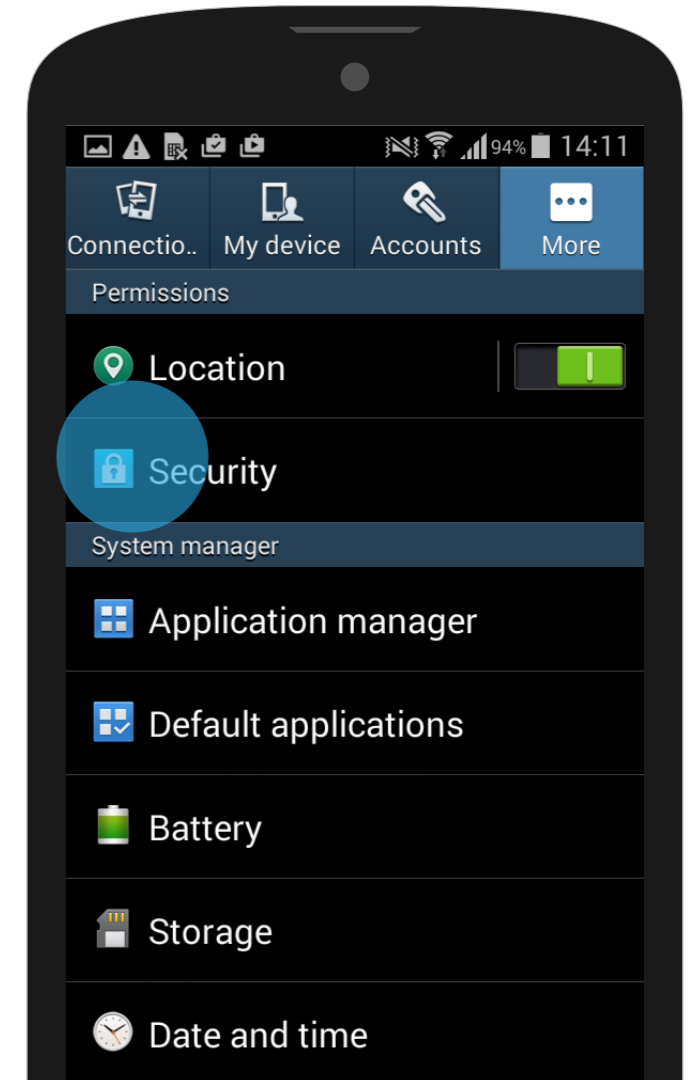
Open "**Settings**".



2

## Security

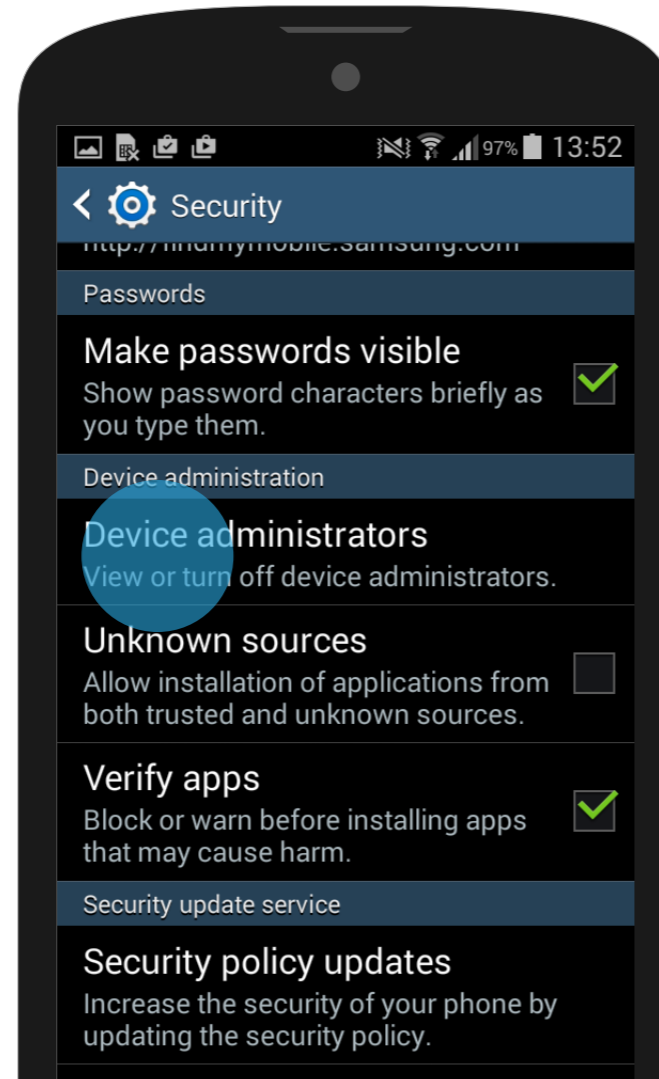
Open "**Security**".



3

## Administrators

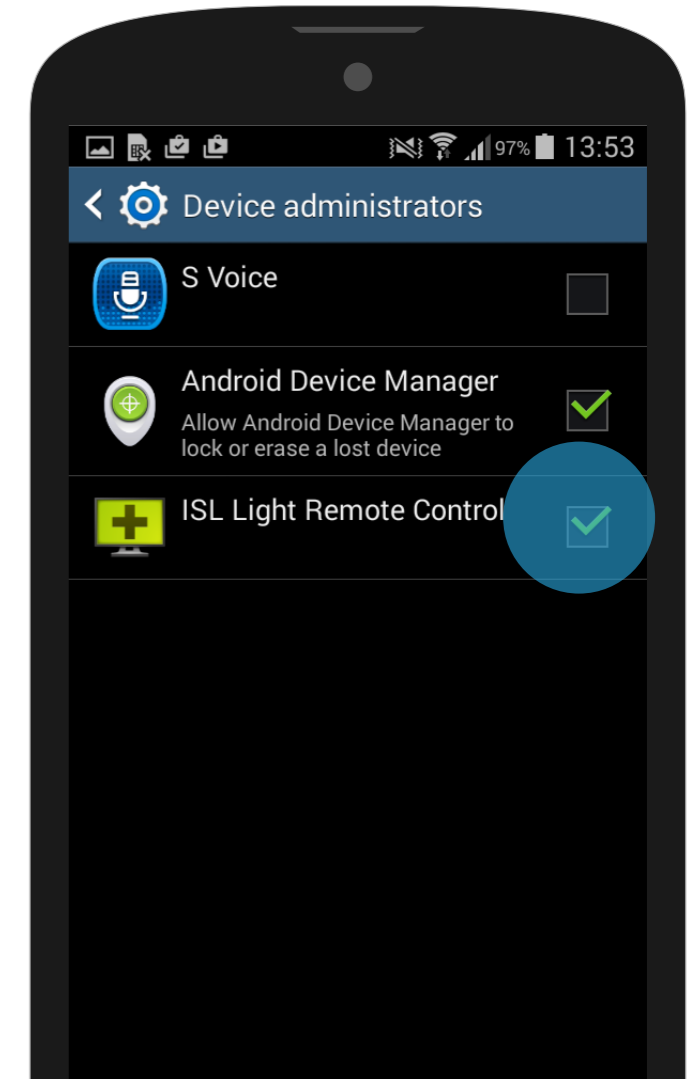
Tap "**Device administrators**".



4

## Deselect

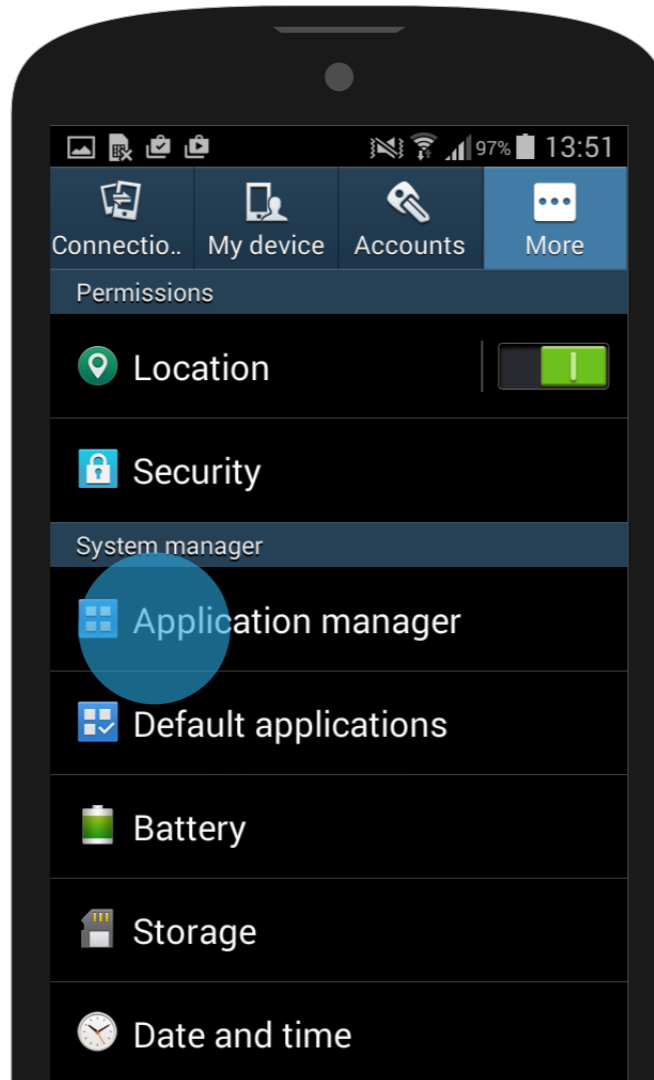
Deselect "**ISL Light Remote Control**" to deactivate it.



5

## Application manager

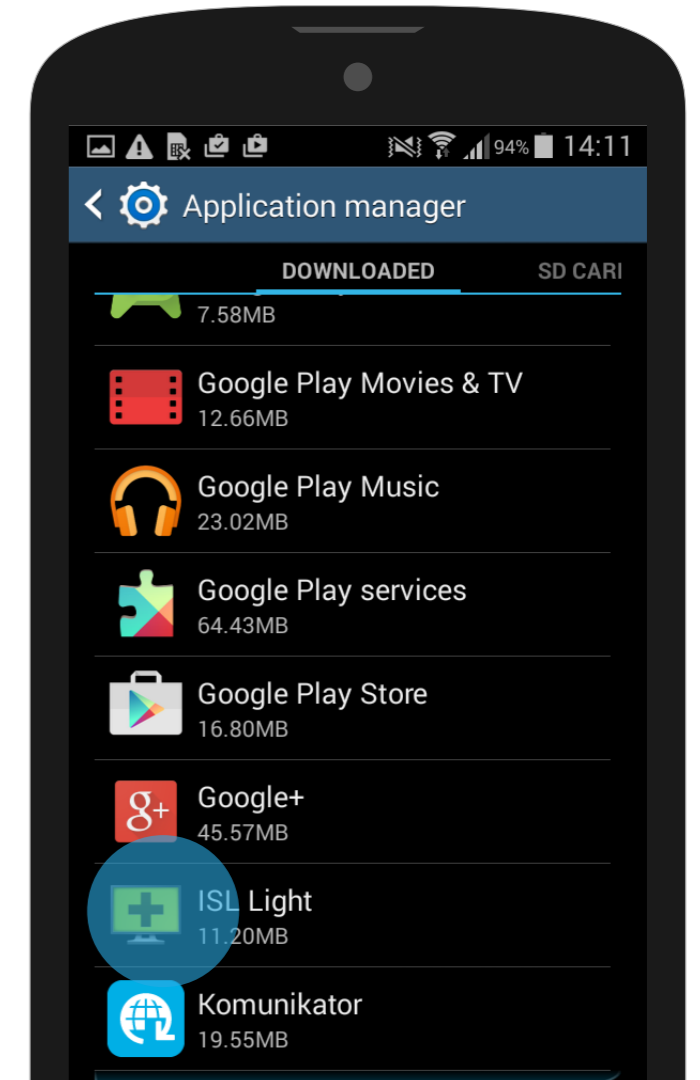
After removing the application from the “**Device administrators**” list, you can easily uninstall ISL Light either in Google Play or by following the default steps to remove an application.



6

## Downloaded

Find and tap ISL Light under “**Downloaded**” apps.



7

## Uninstall

Tap "**Uninstall**" and confirm the action by tapping "**OK**" in the next pop-up.

